

Performance Indicators

Operational Performance

System Delivery

	Units	July	August	September	YTD	
No of Trains Delivered to the Terminal	Actual	trains	633	619	553	1805
	Scheduled	trains	702	688	588	1978
No of Tonnes to be Delivered to the Terminal	Actual	tonnes	6,267,370	6,146,710	5,449,272	17,863,352
	Scheduled	tonnes	6,879,600	6,742,400	5,762,400	19,384,400

Inloading Performance

Average Terminal Unload Time	hrs:min	2:11	2:12	2:19	2:14
Average Train Unload Time	hrs:min	1:49	1:52	1:58	1:53

Yard Performance

Average Stock Build Time / Parcel	days	2.8	3.2	3.2	3.1
Average Stock Residence Time / Parcel	days	1.9	1.6	2.2	1.9

Outloading 1 Performance - L5

Utilisation	%	53.0%	75.9%	78.2%	69.1%
Average Outloading Rate	tph	4608	4317	4695	4528

Outloading 2 Performance - L6

Utilisation	%	63.0%	56.5%	67.3%	62.3%
Average Outloading Rate	tph	4863	4792	4569	4762

Outloading 3 Performance - L15

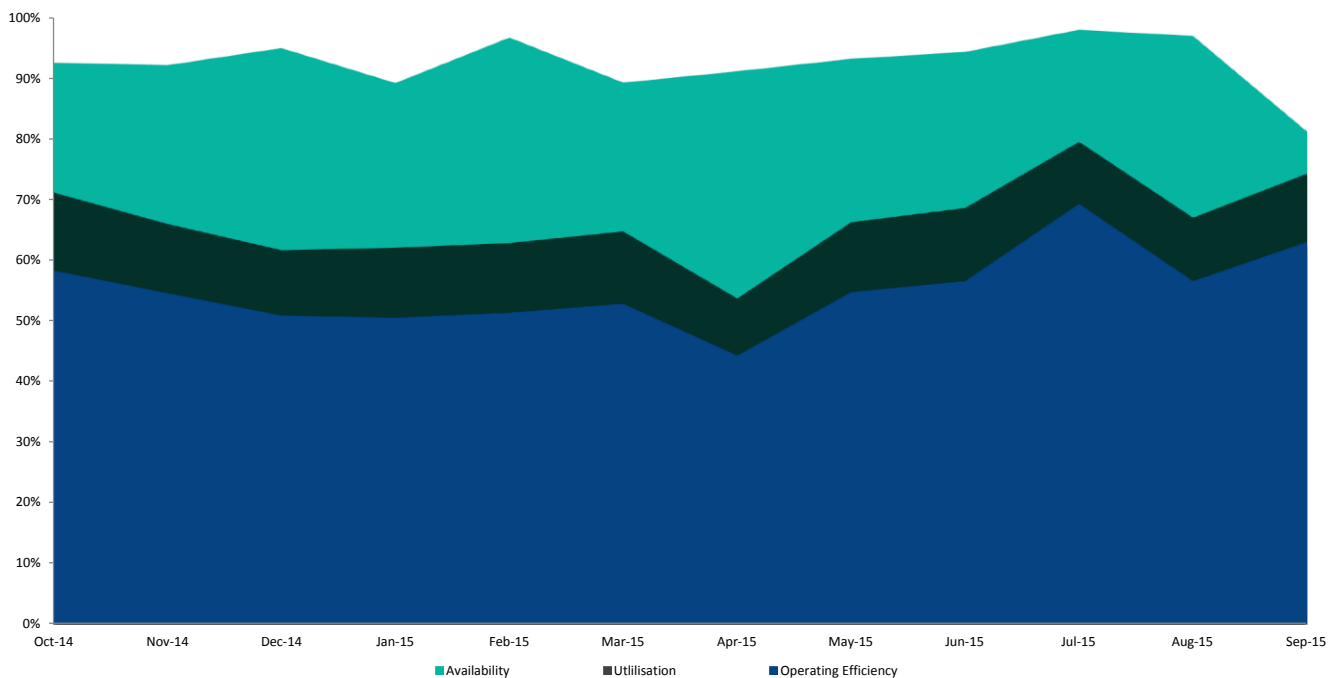
Utilisation	%	85.2%	77.2%	81.4%	81.3%
Average Outloading Rate	tph	5261	5112	5178	5190

***Utilisation is a measurement of an entire system string. e.g. Outloading 1 to Shiploader 1.*

Average Outloading Rates

Handy	tph	3319	2933	2755	3125
Panamax	tph	4075	4474	4310	4279
Japmax	tph	4815	4761	4947	4849
Cape	tph	5442	4859	4996	5102

Operating Efficiency Inloading



Performance Indicators

Operational Performance

Environmental Licence Performance

	Per Qtr	June	July	August	YTD
Dust Deposition Exceedance	Nil	Nil	Nil	Nil	Nil
Total Suspended Particulates Exceedance	Nil	Nil	Nil	Nil	Nil
Noise Levels Exceedance	Nil	Nil	Nil	Nil	Nil

NB: Receipt of validated noise and dust deposition data is generally one month behind.

Vessel Performance

Number of Vessels

Vessel Mix

	Units	July	August	September	YTD
Handy	Ships	5	2	2	9
Panamax	Ships	7	7	11	25
Japmax	Ships	10	23	23	56
Cape	Ships	30	29	21	80

Number of Parcels Per Vessel

Handy	parcels/vessel	1.0	1.0	1.0	1.0
Panamax	parcels/vessel	1.3	1.1	1.3	1.2
Japmax	parcels/vessel	1.4	1.4	1.1	1.3
Cape	parcels/vessel	1.9	2.2	2.1	2.0

Vessel Mix

Handy	%	4.5%	1.2%	1.4%	2.3%
Panamax	%	7.8%	6.0%	13.5%	9.0%
Japmax	%	13.2%	28.1%	34.9%	25.4%
Cape	%	74.5%	64.7%	50.3%	63.3%

Total Tonnes

t	5,695,907	6,368,860	5,605,960	17,670,727
---	-----------	-----------	-----------	------------

Vessel Queuing

Average Daily Total Vessels in Queue	Vessels	10.3	12.5	8.7	10.5
Average Daily Vessels with Unavailable Cargo	Vessels	2.5	5.0	0.6	2.8
Average Days at Anchor	days	5.6	6.8	6.1	6.2

*** Unavailable Cargo: Any vessel in the queue that does not have all parcels/products available at the mine/s.*

***Weightometer tonnes are used in this report and cut-offs are last wagon and last coal for inloading and outloading respectively*

Operating Efficiency Outloading

